

**U.S. Army Corps of Engineers
Fiscal Year 2023
Handshake Program Application**

Please review instructions before completing application!

Corps Lake/River Project Name: **Harry S. Truman Dam & Reservoir**
District / Division: **Kansas City District / Northwest**
Handshake Proposal Title: **Roadside Park, Osage / Sac River Overlook**
Corps POC Name: **Dylan Roeder**
Telephone: **(816) 389 - 3215 ext.**
E-Mail: **dylan.c.roeder@usace.army.mil**

A. Checklist:

1. Will the Handshake funds be spent on Corps facilities and resources that are being fully maintained by the Corps? (not in outgranted parks) Yes No
 2. Will the Challenge Partnership agreement be with a non-federal public or private entity(ies)? Yes No
 3. Is the proposed activity within current authorities and contained in the annual or 5-year work plan in the approved lake project OMP? Yes No
 4. Have all of the NEPA requirements been considered for this project? Yes No
 5. I am aware the Challenge Partnership Agreement must be reviewed and approved by District Office of Counsel before sending to HQUSACE. Yes No
 6. If the full funding amount requested is not available, could a portion of this Handshake Project be completed with partial funding? Yes No
 7. I am aware that all government funds must be spent in accordance with FAR, DFAR and AFAR contracting laws and regulations, and that Handshake funds cannot be provided to the partner(s). Yes No
 8. Did you participate in a Handshake webinar in 2022 or review a 2021 Handshake webinar on the Gateway? Yes No
-

B. Handshake Funding Request (maximum \$25,000): \$25,000 or any portion of

C. Corps Foundation Bonus Request: (maximum \$5,000): \$5,000

Separate bonus funding provided by the Corps Foundation for a selected Handshake Project. Please do not include bonus funds on your overall spreadsheet below. Provide an explanation of how the funds will be used in the Corps Foundation Bonus section.

D. Incentive Points Category: Check the appropriate box if your application qualifies to receive bonus points on the evaluation score.

This lake/river project has never received Handshake funding. (100pts)

This project will support diversity, equity, and inclusion goals to increase access to a quality recreation experience which includes a safe and healthful environment for a diverse population. At least one of the partner organizations in this project has diversity equity, and inclusion goals as part of their mission. Please describe how your project meets this objective in the Support Diversity, Equity and Inclusion Bonus section. (100 points).

This project will address a backlog maintenance issue identified in the budget process or FEM. Please describe specifically which back log maintenance item(s) will be solved. (100 pts)

E. Describe your partnership and the proposed Handshake Partnership Project:

Project applications will be evaluated on the categories below. Please complete each section as appropriate.

Summary Statement:

Along Highway 82, south of Osceola lies a sweeping view of the Sac and Osage River's convergence, viewable from a semi-developed area locally known as "Roadside Park". Commemorated in this spot is the rich history from the indigenous population to the wild west outlaws, in which lies the diverse beginnings for many of the towns in the area. A beautiful view for nature enthusiasts and a lunch spot for passerby's, this park is utilized by travelers and local groups for a variety of reasons. However, extreme weather conditions, storms, and time have slowly deteriorated many of the park's amenities; including, the steps to the river junction view, monuments memorializing the past of the old west and Osage Tribe, and the overall feel of the park. Additionally, this accessible site, is often by-passed due to lack of signage leading up to it on Highway 82. The proposed project involves park maintenance and improvements, to include: tree removal and trimming, rehab of the stairway and parking areas, new signage on the roadside, interpretive signage, a viewing telescope, and updated landscaping. This rehabilitation will inspire more visitors, nature-filled lunch gatherings, local meetings and educational opportunities, and longer stays. Handshake funding would support these improvements and bring new life to a beautiful historic park showcasing the Corp's Handshake Program objective of collaborative partnerships for the greater good.

Handshake Funding Cost Break Down:

The project cost proposed includes the following prioritized estimates with a short description of the work to be provided. Whatever funds are allocated will be distributed in the order below.

- \$18,500 for stair maintenance, landscape improvements, and repair. Time and weather have deteriorated the organic staircase that leads to the main viewpoint. The repair will include masonry and placement of any missing stones and steps and will reduce potential trip and fall hazards.
- \$2,500 for signage and interpretive panels within the park, sharing the rich history of the area. Natural stone signage will be added to enhance park features, including historic signage to capture the rich culture of the area, educational signage about local plant species.
- \$5,000 to add an outdoor viewing scope near the picnic area for a long distance view of the wildlife, rivers, and natural landscape.
- \$20,000 for tree removal and trimming. This much needed grooming at the park will remove unnecessary overgrowth and clean up debris limbs caused by past inclement weather. This will make the park more inviting and broaden the expansive view of the river junction, which so many come to see.
- \$88,655 for paved parking to accommodate visitors and gatherings from local groups and organizations, as well as roadside signs on Highway 82 to identify the park in advance of arrival.

Breakdown of funding responsibility is included in the funding table within this application.

O&M Impacts:

USACE will maintain overall responsibility, direction, and coordination of the park renovation. Funding will be a shared partnership between the stakeholders identified within this application and USACE. The partners listed herein have pledged over \$115,000 in volunteer hours, in-kind services, maintenance, and materials to revitalize the park. The Handshake Partnership funding will be used to improve the existing infrastructure of the roadside

park and bring historic structures new life. Long-term area maintenance commitments from willing partners will reduce project O&M costs over the lifecycle of the proposed project. The Roadside Park has existed since 1937 and been maintained by the Sons of Confederate Veterans since 2000. Through the Handshake Partnership awards and Challenge Partnership agreements, we will ensure the existence of this park for the next 80 years.

Identified structures to be added to the park, such as the viewing scope, have been chosen on their longevity in outdoor environments with heavy use. Additionally, durable and low maintenance signage was chosen based on extreme weather changes and outdoor location. Aside from small repairs completed by volunteers, the signage, viewing scope, and stair repair are expected to last roughly 25+ years.

Partnership Value:

This proposed project has brought together federal, state, and local partners to work cooperatively towards the goal of USACE park improvement. Buy-in at each level was necessary before being able to apply, as the longevity and sustainability of this project relies not only on the initial investment from USACE, but the ongoing O&M contribution from the project partners.

The Harry S. Truman Project consistently works to build relationships with all communities within their areas of operations. Through these relationships, it has been found that sadly, many of the rural communities do not have the resources or funds to prioritize upkeep of areas that do not fall under their jurisdictions. This opportunity has helped USACE forge partnerships that were not as prosperous in the past. As this project developed, local leaders, non-profit associations, and community organizations came forward to offer their services in-kind and volunteer their time to help USACE rejuvenate this small piece of land that sits within their community's boundaries. Their partnership, collaboration, and time provide both immediate and long-term benefits. The Roadside Park will finally have a dedicated and vested group to maintain the look and feel of an inclusive community gathering spot and visitor landmark. Long-term, the relationships built from collaborative efforts will open the lines of communication, allow for better flow of information, and prove the USACE mission of partnerships.

The partners that asked to be involved truly care about their community and want to invest in its history, relevancy, and future. This project will not only bring more visitors to the Roadside Park, but to the local communities that surround it, improving their economic diversity. Partnerships, such as these, are more than just dollars - they are lasting investments in the communities we want to enrich.

Recreational Benefit:

Roadside parks and viewing areas may not have the miles of walking, hiking, and biking trails that many projects may be offering; however, refreshment of the mind and body in the serene location of Roadside Park is the key recreational benefit this proposal is offering. Currently, local organizations utilize the park for outdoor meetings and gatherings, visitors stop to capture the breathtaking view before hurrying to their destination, and travelers stop to stretch their legs and allow their four-legged companions to take a well-needed car break. This recreation stop promotes serenity and calm in a very fast-paced and dynamic world. With the improvements proposed in this application, the tranquil view and comfort of this park will further promote the mood enhancing benefit of mindfulness in nature. With steep cliffs, wooded surroundings full of wild game, and rivers flowing in tandem, the backdrop of this stopping ground will be a recreation and restoration haven. Additionally, this park is listed as a featured place to visit and is used as the cover art for the journal titled, "Missouri State Parks & Historic Sites Adventure Book," (<https://mynaturebookadventures.com/products/missouri-state-parks-historic-sites-adventure-planning-journal>).

Environmental Stewardship Value:

This proposal will show visitors the USACE commitment to cultural and environmental sustainability. The continued upkeep of this park, interpretive signs pointing out area habitat, and the cultural continuum of the project are all examples of the environmental stewardship benefit.

Sustainability of structures already in place; such as the original stairway, shows the beauty of rustic archetypal architecture. The addition of long-lasting culturally focused interpretive signs will allow visitors to reconnect to nature and learn the history of the community, preserving its cultural significance. Adding the viewing scope will encourage people to engage in the natural habitat of the area like the large bluffs, wildlife, and native plants. The amenities of the park not only show the USACE commitment to environmentally sound practices, but will cultivate a culture of environmental stewardship from all who visit.

Communication & Education Value:

Communicating the past educates the future, and this area's past is boundless. The town of Osceola got its name from the Seminole Indian Tribe Chief who was known for his natural leadership abilities. This site was home to a military recruitment camp in the 1860's prior to the civil war. Jesse James and his James-Younger Gang frequented the area, where they sought safe refuge in the nearby towns and villages. Deep historic roots run through this area and the vision of this Roadside Park is to capture a small sliver of it and share it through the modalities outlined in this proposal.

In addition to the communication and education of the past, signage will also inform visitors on the diverse landscape of the area, communicating the geological and natural scenery that surrounds the park. All surroundings will be viewable from a safe distance with the proposed viewing scope.

Strategic educational visions include future groups meeting to educate people of all levels, potential school gatherings to discuss the evolution of the area, and local boy scout and girl scout troop gatherings to communicate the past and learn about the area's natural resources and why they are worth preserving. Outdoor learning experiences that the Roadside Park will offer is a benefit to both the local communities and the numerous people who pass through each day.

Innovativeness:

It is easy to glance beyond the small roadside parks as our hurried society rushes past to get to wherever they are going. Yet, in this time of multiple inputs, efficiency, and speed, it is nice to have that reminder to slow down. This project is enhancing, not only the cultural and educational history of the surrounding area and the past, but is also a reminder to pause and take in the moment when standing on the overlook balcony and beholding the vast expanse of the rivers. Our hope is to offer people time and a small moment of peace while appreciating the landscape of this diverse and unique area.

More so than the project itself is the unique opportunity USACE has to build and cultivate relationships with new people, community organizations, and non-profit agencies. Knitting a larger fabric between USACE and the communities we serve not only epitomizes the goal of the program, but the intention of Truman Project employees each day. Working in the communities is our day-to-day jobs; investing in these communities is the overarching goal. These funds offer the opportunity to achieve that.

Corps Foundation Bonus:

The Corps Foundation Bonus would offer an additional investment to Roadside Park unable to be covered by any awarded Handshake Funding grants. Specifically, the purchase of the viewing scope would be funded through this bonus. The viewing scope is a large part of the recreational and educational goals of this project. Allowing visitors to see beyond the park boundaries and immersing them in the wilderness beyond the setting horizon.

Support Diversity, Equity and Inclusion Bonus:

This viewing point is easily accessible by road and allows people of all mobilities to stop, rest, and view the beautiful scenery with an ADA accessible table for viewing of the confluence. There is also a Native American memorial, which recognizes the Osage Indians who were the first known people to inhabit Osceola and the surrounding areas. This is the only memorial on federal ground on this reservoir that recognizes the Osage Indian Tribe for which the river was named.

Addresses Backlog Maintenance Issues Bonus:

This park was established years ago, with natural stone rock steps and bridges to seamlessly blend with the scenery. However, time and weather have damaged the area causing the park to look dilapidated and become a safety issue for visitors. Due to the specific work needed, maintenance from the USACE standpoint has not been a priority. This funding will provide the park new life and the agreements made with partners will ensure that maintenance backlog issues are not a problem in the future.

Conclusion:

The US Army Corps of Engineers does an incredible job of promoting understanding and awareness to lake visitors of their role and mission; however, investing back into the smaller communities that surround our projects and providing diversity in our recreational and educational programs will expand this mission further. This program was implemented to grow partnerships and we believe this proposal is a strong candidate to do just that. Thank you for this opportunity.

NOTE: To show foresight, commitment, and planning, it is REQUIRED to include maps/pictures/plans/specs as part of your overall package.

Double click on spreadsheet to access data entry fields and to enter Partner names.

You MUST enter partner names into the spreadsheet:

	Local Corps Office	Handshake Funds	Missouri Department of Transportation	Boy Scouts of America - Heart of America Council	Sons of Confederate Veterans	Osceola Optimist Club
Salaries	\$5,000	N/A	\$0	\$0	\$0	\$0
Travel	\$0	N/A	\$0	\$0	\$0	\$0
Materials and Supplies	\$500	\$0	\$0	\$0	\$0	\$0
Equipment Use	\$2,500	\$0	\$0	\$0	\$0	\$0
Funds Contributed	N/A	\$25,000	\$0	\$0	\$0	\$0
Personal Property	N/A	N/A	\$0	\$0	\$0	\$0
Volunteer	N/A	N/A	\$0	\$0	\$4,000	\$500
In-Kind Services	N/A	N/A	\$88,655	\$20,000	\$0	\$0
Other (explain below)	\$0	\$0	\$0	\$0	\$0	\$0
Total	\$8,000	\$25,000	\$88,655	\$20,000	\$4,000	\$500
Share of Total Cost	5.4%	16.9%	59.8%	13.5%	2.7%	0.3%
	22.2%					

	Chamber of Commerce, Osceola	City of Osceola	Village of Roscoe	Partner 8	Partner 9	Partner 10
Salaries	\$0	\$0	\$0	\$0	\$0	\$0
Travel	\$0	\$0	\$0	\$0	\$0	\$0
Materials and Supplies	\$0	\$0	\$0	\$0	\$0	\$0
Equipment Use	\$0	\$0	\$0	\$0	\$0	\$0
Funds Contributed	\$0	\$0	\$0	\$0	\$0	\$0
Personal Property	\$0	\$0	\$0	\$0	\$0	\$0
Volunteer	\$500	\$1,200	\$500	\$0	\$0	\$0
In-Kind Services	\$0	\$0	\$0	\$0	\$0	\$0
Other (explain below)	\$0	\$0	\$0	\$0	\$0	\$0
Total	\$500	\$1,200	\$500	\$0	\$0	\$0
Share of Total Cost	0.3%	0.8%	0.3%	0.0%	0.0%	0

	Partner 11	Partner 12	Partner 13	Partner 14	Partner 15	Total
Salaries	\$0	\$0	\$0	\$0	\$0	\$5,000
Travel	\$0	\$0	\$0	\$0	\$0	\$0
Materials and Supplies	\$0	\$0	\$0	\$0	\$0	\$500
Equipment Use	\$0	\$0	\$0	\$0	\$0	\$2,500
Funds Contributed	\$0	\$0	\$0	\$0	\$0	\$25,000
Personal Property	\$0	\$0	\$0	\$0	\$0	\$0
Volunteer	\$0	\$0	\$0	\$0	\$0	\$6,700
In-Kind Services	\$0	\$0	\$0	\$0	\$0	\$108,655
Other (explain below)	\$0	\$0	\$0	\$0	\$0	\$0
Total	\$0	\$0	\$0	\$0	\$0	\$148,355
Share of Total Cost	0.0%	0.0%	0.0%	0.0%	0.0%	100%

Explanations: Note – though we are asking for the full amount, we would take any amount offered by this program. Our project is prioritizing the stone stair work – this will make the area safer for visitors and offer some historic relevance to the original design. We would be willing to accept any amount of funds from the Handshake Grant to put towards this priority.

- \$20,000 for tree removal and trimming – all work and manpower will be performed and funded by the Boy Scouts of America.
- \$18,500 for stair maintenance, landscape improvements, and repair. Awarded funds will be used to complete this work.
- \$88,655 for paved parking and signage leading to the park. MODOT will provide work, materials, and funding.
- \$5,000 for an outdoor viewing scope. Any additional awarded funds will be used for this work.
- \$2,500 for signage and interpretive panels. Any additional awarded funds will be used for this work.



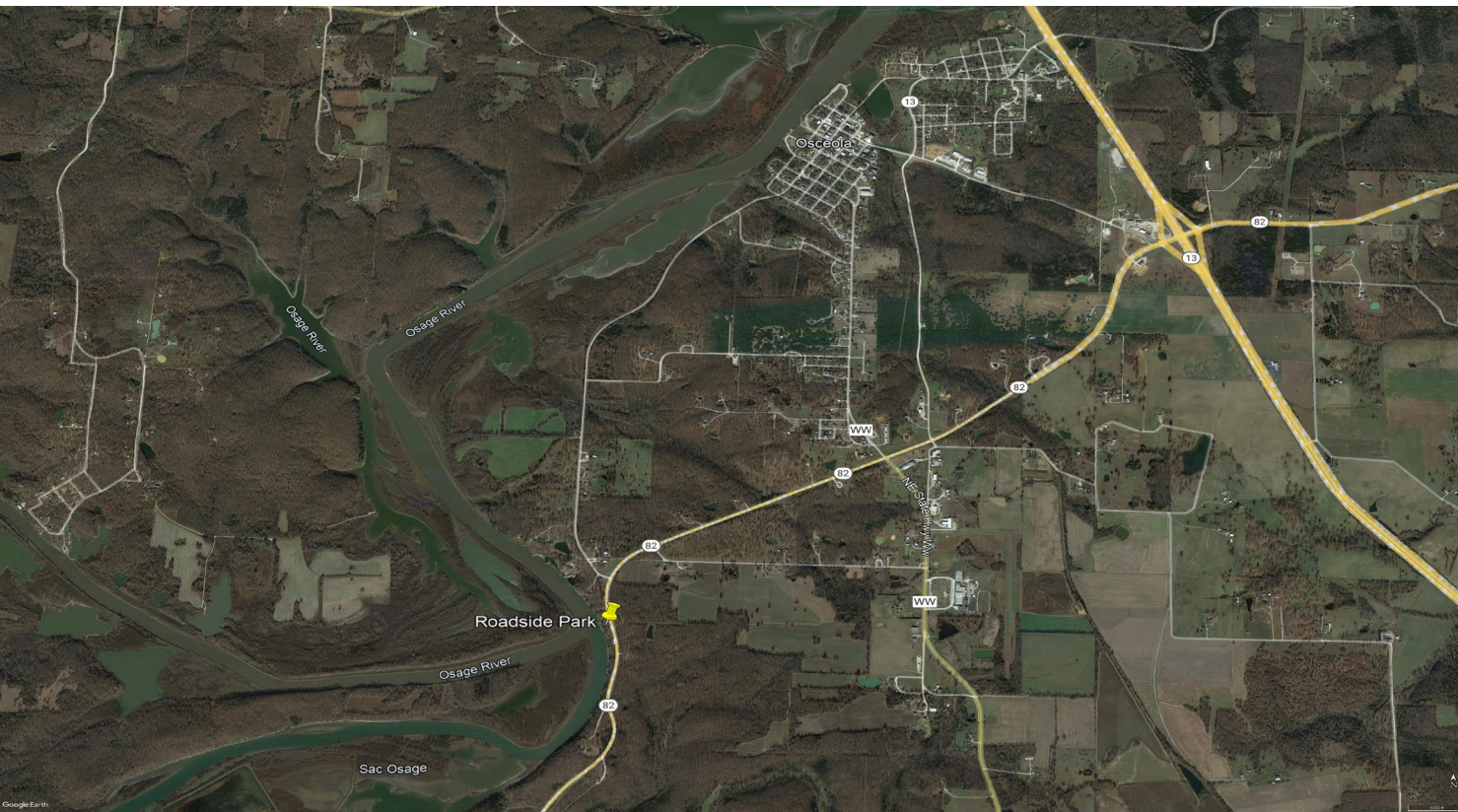
Roadside Park

Time, extreme weather conditions, and storms have slowly deteriorated historic Roadside Park. These photos display the deteriorating rock and safety features (bridge railing), overgrown trees, and hidden views.



Present to Future

Revitalizing Roadside Park will create a visible, welcoming park where visitors can stop to enjoy the view, learn of the historical significance of the area, and enjoy the benefits of nature.



You are Here

The Roadside Park is located a short two miles from Osceola and overlooks the Sac and Osage convergence. The viewing scope depicted above will be placed at the outlook so visitors can view vegetation, animals, birds, and other local natural resources in the two State wildlife areas across the rivers.



Unhidden Gem

The convergence of the Sac and Osage Rivers is a site that, is a memorable view, if you know it is there. This is one image that truly captures the artistry of the area. Revitalizing the park will encourage more people to take the time to breath in the beauty of nature in this culturally rich area.

***This image was donated and used with approval by Tommy Brison <https://www.tommybrison.com/>*